



A NEW PLANETARY HEALTH PROJECT

INDEX

- CURRENT STATE PROBLEMS VS FUTURE STATE SOLUTIONS
- GOALS
- HIGH LEVEL ACTION PLAN & KEY MILESTONES
- WHO WILL COLLABORATE
- WHY JOIN THE WHB?
- OUR THOUGHTS
- WHB INTERNATIONAL STRUCTURE
- ETHICS COMMITTEES
- WHB EXTERNAL AUDIT WATCHDOG COMMITTEE
- WHB GOVERNANCE
- THE GLOBAL ALLIANCE FOR WORLD HEALTH
- A NEW MODEL OF HOLISTIC HEALTHCARE
- WHB ATTACHMENTS
- WHB MISSION
- WHB VISION
- THE NEW WHB NATIONAL HEALTH & WELLNESS SERVICE
- GHA-NNHS REGIONAL DISTRICT
- MIXED PAYMENT SYSTEM
- WHB Q&A
- WHY CONNECT WITH US - WHB SERVICES
- WORLD HEALTH BOARD PARTNERS
- COMMENTS FROM FOUNDERS





CURRENT STATE PROBLEMS VS FUTURE STATE SOLUTIONS

CURRENT STATE PROBLEMS

VS



FUTURE STATE SOLUTIONS

AGENDA 2030 IS THE PROBLEM

Stakeholders / Elements:

- WEF: World Economic Forum
- WHO: World Health Organization
- AI: Artificial Intelligence (technology is good if it serves the human being; but evil if it controls the human being)
- Political corruption
- The Health Passport for travelling
- Climate control
- 15-minute cities
- etc

“A Worldwide Healthcare Network underpinned by ethical, transparent and reliable science, empirical data, and practitioner experience, with authority to support other international and national health agencies.

The WHB aims to ensure that healthcare practitioners and the people will always have free choice, without coercion or restrictions, in providing and managing healthcare.”

CURRENT STATE PROBLEMS VS FUTURE STATE SOLUTIONS

Everyone has the destiny of the Human Being at heart, everyone wants to promote correct aid tools to allow people or groups to **overcome the intransigence** of large corporations, the monopolies of associative bodies that are **not representative** of the entire population of a State nor of that of all Member States, the **restrictions on personal and constitutional freedoms imposed without proven scientific foundations** in the event of epidemics, the **manipulation of information, therapies and treatments**, poverty, illiteracy, diseases, difficult situations in which they are found and can be found.

The **future** of the world will necessarily have to go through a **rebalancing of resources and opportunities** and **cooperation** is one of the ways to get there.

WHB VS WHO

When ideas and economy of a civilization are suppressed, this leads to negativity, contraction and waste or destruction of the components of its dynamics, specifically: people, families, groups, companies, organizations, governments, races, species, spiritual values, animal and plant life, Beings and religions, aesthetics and art, and its behavioral and ethical codes.

Proposed changes to International Health Regulations by the WHO, seek to enforce evil regulations on member states.

The World Health Organization's "zero draft" of the new pandemic preparedness treaty is being stripped of the key three paragraphs on guaranteed human rights and this is particularly concerning given the egregious violations of rights we've seen across the board and in every country around the world during the so-called "pandemic".

The superior management organizations of a planet should ensure that its civilizations continue to flourish and prosper while granting maximum freedom to the individual, since the individual is the fundamental

component of a civilization.

Broadly understanding this concept will improve survival and increase the expansion rate of civilization. Suppressive influences cannot exist vitally under these operating conditions and disappear as quickly as possible or are quickly handled.

WHB membership is voluntary. All services provided are optional. No member is required to access all, or any, of the services. Each person is expected to exercise their own free will in every decision about the services or information that they source from WHB.





GOALS

1

Have a seat and a voice at the highest policy-making **tables** in the world

2

Strengthen professions in health, spiritual and physical wellbeing worldwide

3

Help shape the **global strategy** for health & psychophysical and spiritual wellness practices

4

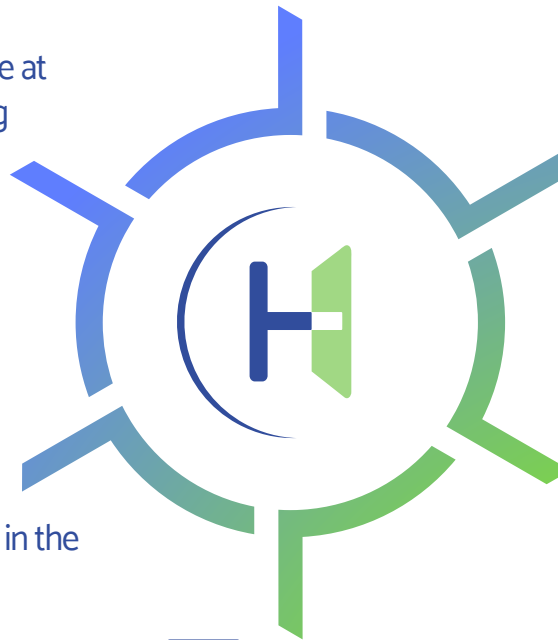
Bring **cures** to everyone in the world. Create a mixed **payment system**.

5

Provide freedom of **therapeutic choice**, and respect for **informed consent**.

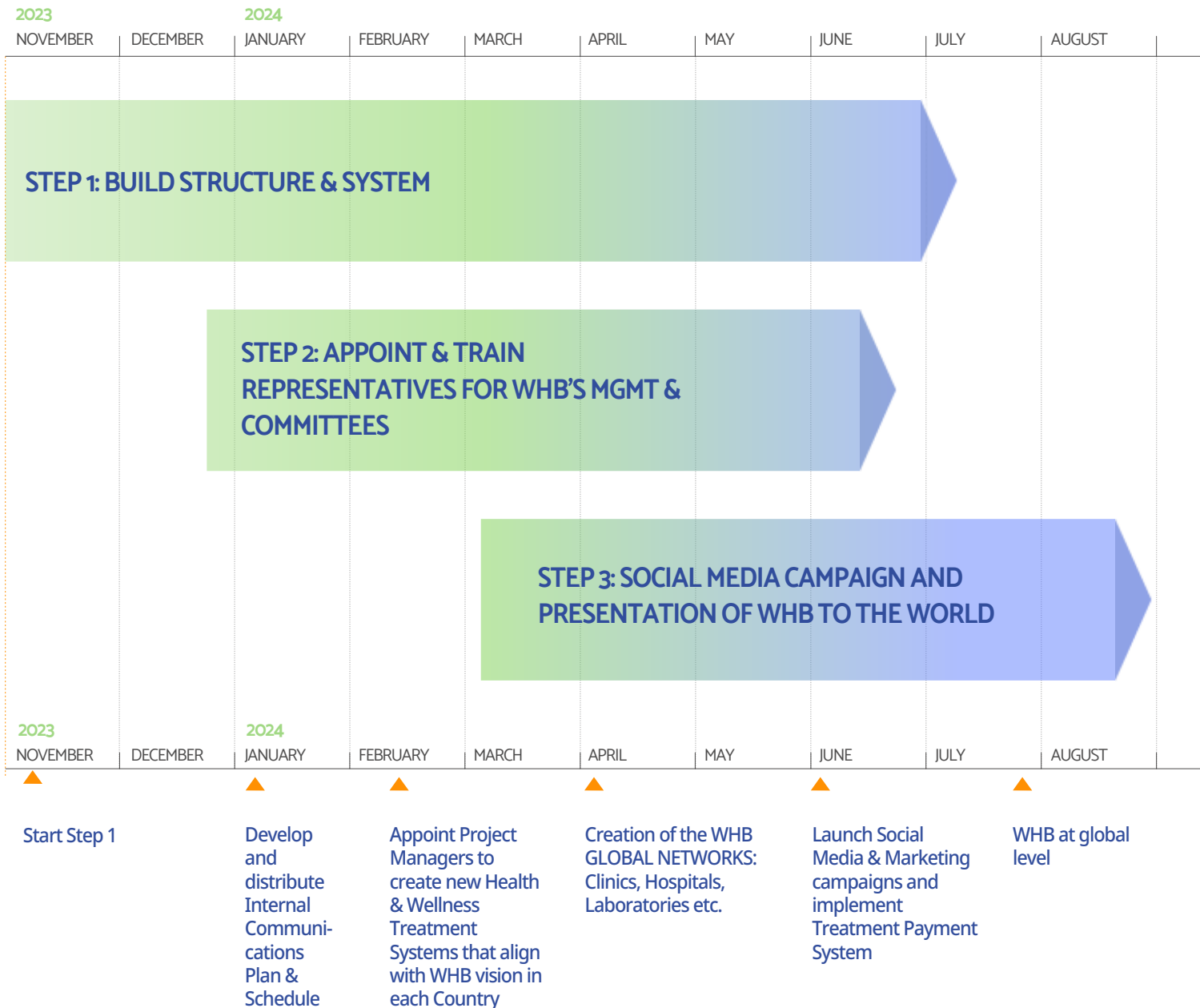
6

Create a **new economic system** that serves and **helps** the people.





HIGHLEVELACTIONPLAN & KEYMILESTONES





WHO WILL COLLABORATE

WHO WILL COLLABORATE

For the WHB, the individual is at the centre and treatment must be personalised, as every individual is different and one disease cannot be treated the same on all.

WHB want the interests of big pharma corporations and corrupt governments never to supersede the opinion of the practitioner and also wants within a generation (20-30 years) to take away the power of chemical pharmacology to cure and/or treat a disease.

The WHB wants:

- Provide financial support;
- Support, connect and empower pro-human communities, businesses and services globally on a central platform;
- Be an ongoing positive force for change in Health and Wellness, bringing treatments and cures to everyone and all over the world;
- Make the lives of local communities better and more united in the fight against the globalist and destructive elites in a system of mutual love with the goal of physical and spiritual support of others.





WHY JOIN THE WHB?

WHY JOIN THE WHB?

Sovereignty for Practitioners

- Healthcare practitioners from all modalities sharing skills, experience and best practice, who are free to operate without every oppressive government intervention or Restrictions.
- Ethical practices.
- Scientific debate.

Sovereignty for Patients

- Access to all treatments, modalities, medicines, etc.
- Respect for one's own wishes.
- Fully informed, voluntary consent.
- Range of payment options for services.

New Global Healthcare

- Global database of knowledge and research at disposal of all health and wellness practitioners.
- Inclusion of all kinds of healing practice and philosophy.
- Use of a fair mixed payment system to bring treatments to everyone.

Exit the System

- Helping people to live a dignified life and not being controlled by global corporations, politicians and government regulation.

A New Life Model

- New social, spiritual and welfare model.
- Healthy mind in a healthy body for a completely free spiritual being.



OUR THOUGHTS



OUR THOUGHTS

Defending our thoughts, our rights, our spaces, our lives, our health, our family and our friends, defending our territory, our farms, our homes, our free movement and our choices. All of this can never be bought, and with so many of us fighting and scattered in various territories around the world, it will not be so easy to suppress all opposing entities.

OUR STRENGTH WILL COME FROM UNITY, UNITING IN A WELL-ORGANISED STRUCTURE THAT CAN COUNTER THE CURRENT SYSTEM OF OPPRESSION AND COERCION.

THE WHB PARTNER ASSOCIATIONS WILL REMAIN AUTONOMOUS, AS THEY OPERATE IN THEIR OWN TERRITORIES, BUT WILL WORK TOGETHER WITH THE AIM OF CREATING A STRUCTURE SO POWERFUL THAT IT CANNOT BE SUPPRESSED BY TYRANTS.

IT WILL THEN BE THE PEOPLE WHO WILL GIVE STRENGTH TO THE STRUCTURE.



WHB INTERNATIONAL STRUCTURE

THE IMPORTANCE OF AN ORGANISATION STRUCTURE AND GOVERNANCE

It is critical that we don't confuse the **DESIRE NOT TO ENFORCE** a central power/control, with the necessary **REQUIREMENT** for an organizational structure and governance that **ENABLES** an effective, efficient, viable and ethical **COMMUNICATION** and **COLLABORATION** between ALL WHB players around the world.

WHAT we seek to achieve is WHB operating globally in compliance with the principles of non-discrimination, proportionality and transparency, that enables and supports:

- 1) Healthcare practitioners from all modalities sharing skills, experience and best practice, who are free to operate without oppressive government intervention or restrictions;
- 2) People of the World free to make their own health choices with access to the Healthcare practitioners, modalities, medications, and medical devices of their choice, with no coercion or restrictions from oppressive government policies or regulations.

THE GLOBAL ORGANISATION STRUCTURE

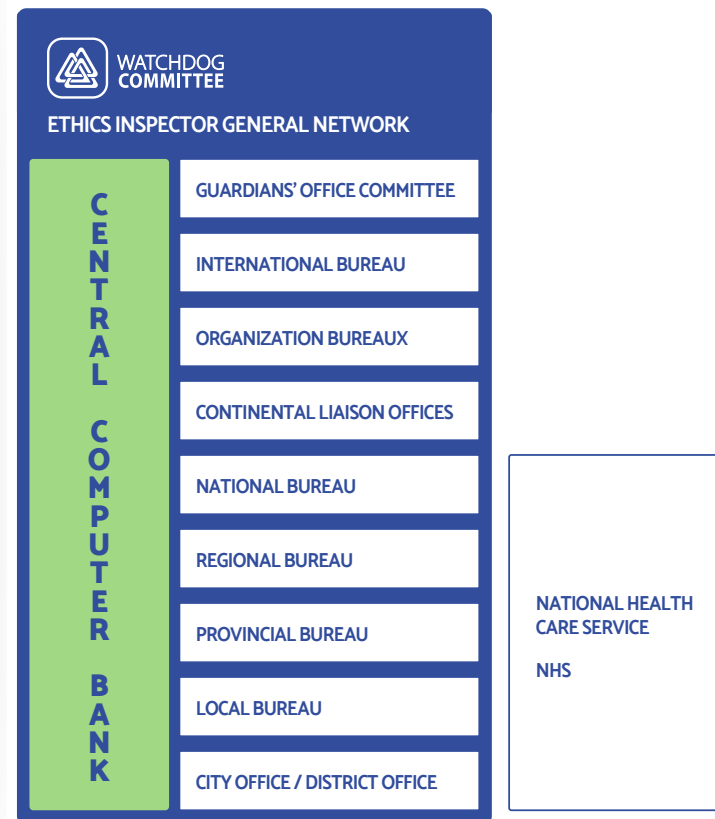
The WHB management structure exists solely to help WHB organizations and units that provide members services to reach more and more audiences; and to give the associations an operational integration scheme with other entities in their territories, so as to align efforts and actions and to more easily achieve the common goals with greater effectiveness.

Our intention is for the WHB to grow exponentially and actively participate in improving quality of life. We don't have an infinite amount of time to fix this planet. We are currently participating in a race against time. This society is on a downward spiral and the growing statistics of deaths, vaccine harms and ill health, crimes, drugs, and economic problems in every part of the world, are testament to this.

It is our responsibility to do something about it by creating an alternative.

MANAGEMENT IS HERE TO HELP MAKE ALL OF THIS REAL.

The intention of all management activities is to help achieve the goal of expanding organizations that provide services to improve people's health, well-being, awareness, and the road to FREEDOM. This is the **ONLY** reason the management structure exists. And this is the general coordination factor of all WHB activities.





ETHICS COMMITTEES

“JUST” A QUESTION OF ETHICS

Ethics consists simply of the actions that an individual takes upon himself. It is a personal thing. When one is ETHICAL, it is by his own will and is done by himself, of his own accord. Ethics is so native to the individual that when it goes off the rails, he will always seek to overcome his own lack of Ethics. All too often, however, with no information about how to do it analytically, his way of dealing with it is inventing motivators; he tends to believe or pretend that “something was done to him” that prompted or justified his unethical action, and at that point he starts to go downhill. No matter how criminal an individual is, unconsciously, he always will be trying, one way or another, to put Ethics back on himself.

When the individual fails to act ethically, the group takes actions against him, and this is called Justice.

Justice is a necessary action for any successful society. Without it, the brutes attack the weak, the decent and the productive.

Ethics must be in place before every kind of technology can function effectively for the good of the people.

When it doesn't exist, or it diminishes, then technology doesn't function as it should, suppression sets in, and “death” follows.

So if someone doesn't hold the line, all become victims of oppression.

WHB is making its broad environment safe so that production can occur and service can be given and exchanged.



The **purpose** of Ethics Committees is:

TO REMOVE WHB MEMBERS' COUNTER-INTENTIONS FROM WHB ENVIRONMENT.

And having accomplished that, the purpose becomes:

TO REMOVE OTHER COUNTER-INTENTIONNESS FROM THE WHOLE ENVIRONMENT.

Thus, **progress** can be made by all.

There are people who suppress. They are few. They often rise up to being in charge, and then all things decay.

WHB has **TWO independent ETHICS COMMITTEES NETWORKS** working for and alongside WHB. One (WDC) operates completely externally, the other one (GOC) is the highest structural entity inside the highest WHB echelon, the WHB International sector.

THINGS
RUN RIGHT
BECAUSE
ONE
MAKES
THEM RUN
RIGHT



WHB EXTERNAL AUDIT WATCHDOG COMMITTEE

WATCHDOG COMMITTEE (WDC)

THE WATCHDOG COMMITTEE (WDC) IS THE PROTECTOR OF THE WHB VISION. THE PURPOSE OF WDC IS:

- TO MAINTAIN THE HIGHEST ETHICAL STANDARDS OVER ALL WHB ENVIRONMENTS;
- TO PROTECT ALL ITS MEMBERS, PARTNERS AND THE PUBLIC;
- TO MAKE SURE THAT THE TECHNOLOGIES TAUGHT THROUGH THE WHB REMAIN IN GOOD HANDS AND ARE USED PROPERLY.



The WatchDog Committee (WDC) is not part of the WHB. It is a parallel policing body which ensures weekly that the WHB works to the highest Ethical standards.

The Chairman of the WDC Board sees that the WDC accomplishes its purpose, and she has under her the Snr Inspector General, who manages all of the networks:

- Snr Inspector General for Ethics;
- Ethics Inspector General for BioEthics;
- Ethics Inspector General for Patient Healthcare;
- Ethics Inspector General for Technologies;
- Ethics Inspector General for Management;
- Ethics Inspector General for Finances;
- Ethics Inspector General for Corporations & Businesses.

Each Inspector General polices the proper application of the WHB Vision & Mission within her/his respective area, across all levels up and down the WHB structure.

The Snr Inspector General for Ethics has the

responsibility for keeping the World Health Board free from internal and external subversion, thus preserving and reinforcing the gains of International WHB. As part of this s/he polices the exact application of the standard Ethics and justice policies and sees that effective measures are taken to thwart those who may intentionally attempt to misuse the trademarks of the WHB.

The Inspector General for BioEthics overviews the application of the highest Ethics standards about scientific, genetic and medical topics by policing all networks that deal with WHB Members.

The Inspector General for Patient Healthcare has the responsibility for keeping the maximum well-being of WHB Members during their stay in the WHB healthcare facilities.

The Inspector General for Technologies polices technical standards internationally through effective technical correction and enforcement actions that police in the correct use of the trademarks. S/he sees that on-source technologies are available to the public

and off-source technologies are hammered out of existence, by policing all technical compilations done by the WHB International in order to verify and guarantee exact reproduction of, and respect for, source materials.

The Inspector General for Management polices in the exact use of the WHB administrative policies by management so that the WHB continues to grow and prosper. Ensuring proper coordination channels which hold the form of the org internationally exist and adhered to is key to this. In order to perform her/his functions, the Inspector General for Management has under her/him the Department of Authorization, Verification and Correction International (AVC Int), which is responsible for authorizing and verifying the evaluations, strategies, programs and issues from the WHB management to ensure they are on policy.

WDC is the organization which polices the coordination channels of the WHB and it's Corporations, get in and hold the form of all orgs internationally and also enforces the correct use of the trademarks and service marks of the WHB.

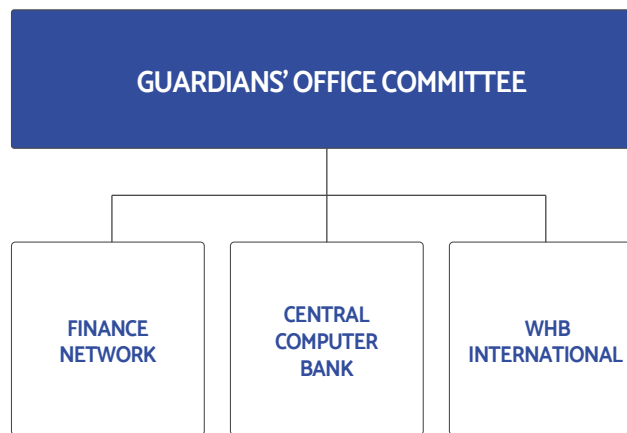
GUARDIANS' OFFICE COMMITTEE (GOC)

GUARDIANS' OFFICE COMMITTEE (GOC)

This ETHICS COMMITTEE is part of the WHB International MGMT echelon. It is the internal but independent organization that inspects and regulates to maintain the highest standard of Ethics within the WHB organizations and units. It is not a unit that deals with management. It is made up of people of high moral value who themselves periodically undergo security checks by the WatchDog Committee, to ensure the highest standards of ethical behavior for the entire structure and its satellites.

The purpose of this Ethics Committee is also to obtain completely ethical, stable and functional operational units of management, and its representatives are present at every level of the WHB.

It has a regulatory organization that parallels that of management, which regulates the activities of all WHB organizations at all levels. It has a branch near each organization (WHB Organization Bureaux and each Continental Liaison Office) and a representative inside each org and unit.



The head of the network of the various levels of offices is responsible for carrying out the orders of the Ethics Committee, as well as providing it with the information it needs to oversee the application of Ethics at each operational level. Regular reports on the true state of the situation within each managerial site are sent to the Ethics Committee from all its business units.

Within the Ethics Committee there are numerous international departments headed by a manager.

One of these is the WHB PUBLIC RELATIONS OFFICE which is responsible for overseeing that the image of the WHB is presented appropriately to the general public and in the offices of both management and those providing services directly to patients.





WHB GOVERNANCE

WHB GOVERNANCE

The governance of the WHB organizational structure is made up of a series of operational levels that manage the flows of information collection, processing and redistribution and the provision of action plans to facilitate the expansion of the WHB.

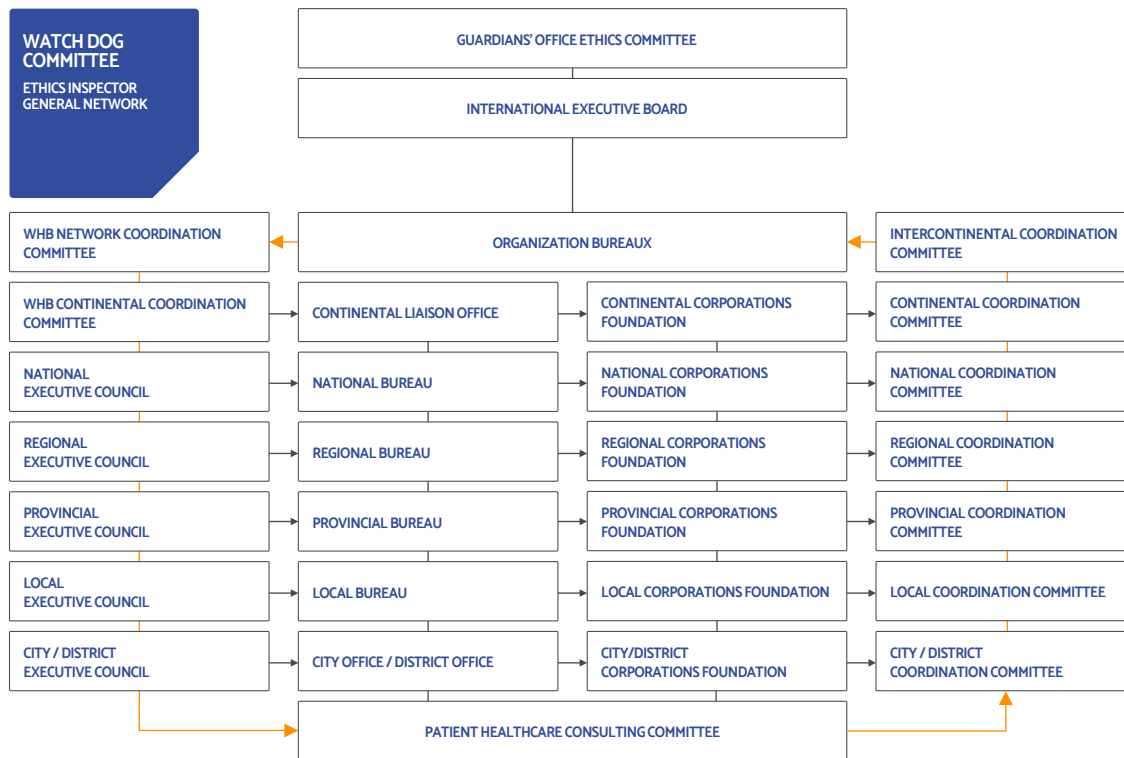
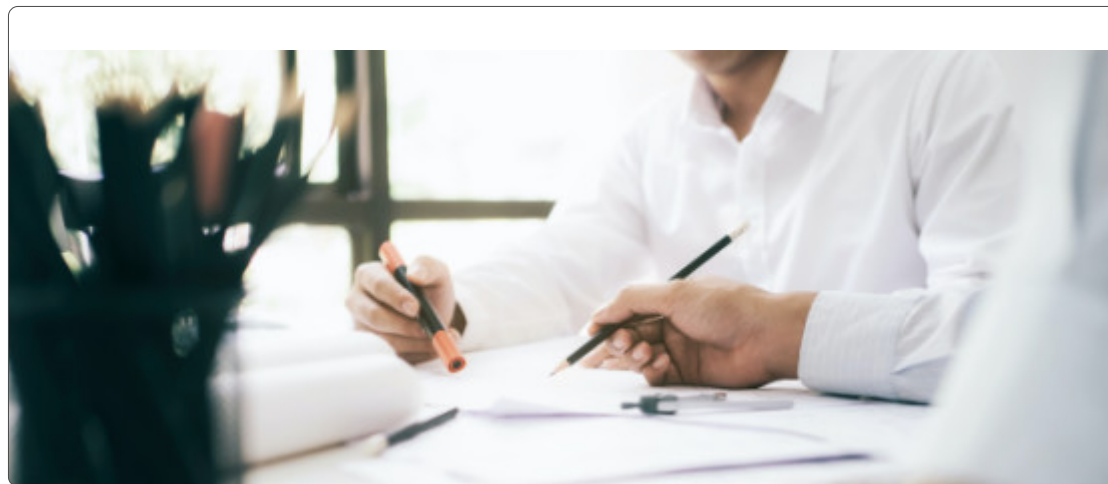
All the WHB organizations at all levels must perform a dual function:

- **Management** - with the execution of plans coming from international management;
- **Associations' information flow** - sending to management, through the Coordination Committees at each level, the information necessary to develop the correct managerial actions specific to each country. It's a closed flow circle.

The Coordinating Committees are made up of all the representatives of all the associations that join and will join the WHB.

The co-design paths will be structured as follows:

- Working groups for preliminary feasibility assessment in order to highlight, on the basis of an analysis of the problems and potential of the area, the projects that can be activated, the human resources and techniques available, the innovations to introduce, the implementations to be produced and the processes to activate. These working groups should lead to the identification of the most suitable project ideas and partnerships for the drafting and subsequent presentation of projects.
- Establishment of partnerships, including mixed public/private partnerships where planning groups can be activated. This constitution can take place either through the formalization of a Collaboration Agreement or with the declaration of intent to constitution in case of approval of the project.
- Processing of the executive designs in response to the results stemmed by the working groups and communicated to the management via the Coordination Committees, which are shared and deemed adequate by all the various subjects involved in the co-design process.





THE GLOBAL ALLIANCE FOR WORLD HEALTH

THE ETHICAL ALTERNATIVE TO THE WHO

The Global Alliance for World Health (GHA-WW) is an internal body of the World Health Board that deals exclusively with the coordination and management of the health sector, at the level of Governments of the Member States. Its' role will be to co-ordinate the prevention and intervention actions

necessary to maintain Health on an international scale, operating on two levels:

- at the NATIONAL level, proposing a new model of holistic healthcare spread across the territory;
- on a WORLDWIDE level, proposing itself as an alternative to the WHO monopoly.

The objective of the General World Health Assembly (GHA-WW) is cooperation with, and amongst, Member States, to achieve the highest possible level of health by all people.

To achieve its goal, the functions of the GHA-WW are:

- act as a direction and coordination authority for international health work;
- establish and maintain effective collaboration with the United Nations, specialized agencies, government health administrations, professional groups and other organizations, as may be deemed appropriate;
- assist governments, upon request, in strengthening health services;
- provide adequate technical assistance and, in the case of an emergency, necessary aid upon request or acceptance by governments;
- provide, or assist in providing, at the request of the United Nations, health services and facilities to special groups, such as populations in administered territories;

- establish and maintain such administrative and technical services as may be necessary, including epidemiological and statistical services;
- stimulate and advance work to eradicate epidemic, endemic and other diseases;
- promote, where necessary in collaboration with other specialized bodies, the prevention of accidental injuries;
- promote, in cooperation with other specialized agencies where necessary, improvements in nutrition, housing, sanitation, recreation, economic or working conditions and other aspects of environmental hygiene;
- promote cooperation between scientific and professional groups that contribute to the advancement of health;
- propose conventions, agreements, and regulations, and make recommendations with respect to international health matters; and carry out such tasks as may be assigned to the Organization and are

consistent with its objective;

- promote maternal and child health and well-being; and foster the ability to live harmoniously in a constantly changing global environment;
- promote activities in the field of mental health, in particular those that influence the harmony of human relationships;
- promote and conduct research in the field of health;
- promote better standards of teaching and training in healthcare, medical and related professions;
- study and report, in collaboration with other specialized bodies, if necessary, on administrative and social techniques that impact public health and medical care from preventive and curative points of view, including hospital services and social security;
- provide information, advice and assistance in the field of health;
- contribute to the development of an informed public opinion among all people on health issues;
- establish and revise, as necessary, international nomenclatures of diseases, causes of death and public health practices;
- standardize diagnostic procedures as needed;
- develop, establish and promote international standards for food, organic, pharmaceutical and related products;
- in general, take all actions necessary to achieve the objective of the Organization and the WHB.

Membership in the GHA-WW is open to all States.



A NEW MODEL OF HOLISTIC HEALTHCARE

A NEW MODEL OF HOLISTIC HEALTHCARE

WHB ACADEMY TRAINING CENTERS

The ultimate goals of the WHB is the full integration of natural medicines within all global health systems, which will meet citizens' growing demand for natural, traditional, ethnic and holistic healing in a safe medical context.

To this end, the WHB seeks to raise awareness among global institutions and NGOs about the role that Complementary and Alternative Medicine (CAM) in general, and natural and spiritual practices in particular, can play in global healthcare. Holistic therapies and all CAMs first address the disease by trying to support and induce the individual's self-healing process. If recovery can occur from this alone, the likelihood of adverse effects and the need for high-impact, high-cost interventions are reduced.

It is this orientation towards self-healing and health promotion – improving health rather than defeating disease – that makes WHB approaches particularly appropriate.

The WHB, as CAM is requested by many tens of millions of citizens, has the potential to humanize modern medicine and broaden its vision beyond disease, towards health and well-

being in its broadest sense.

To achieve this goal, the WHB seeks to maintain working relationships with (1) all international associations in the field of natural, traditional, ethnic, ancestral and holistic medicines, (2) all international associations in the field of complementary and alternative medicines, and (3) all relevant NGOs and international institutions, such as, speaking of Europe: the European Parliament, the European Commission, all the Working Groups on Medicinal Products of the Directors of Natural Medicines Agencies, the European Directorate for the Quality of Medicines and Healthcare related to the European Pharmacopoeia.

The WHB intends to be, at a global level, the standard-bearer of a new paradigm of Holistic HealthCare. Each type of healing practice will be supported by research protocols to validate its effectiveness, put in relation with all the others,

brought to the attention of general practitioners via the WHB diagnostic platform, and adopted when it is suggested its use, without any prejudice, but with the support of results derived from various clinical tests.

In recent years, 'holistic health centres' have mushroomed. Such establishments, which sometimes also use the term 'integrated' or 'integrative' instead of holistic, offer a range of 'alternative' therapies and promise to treat not just the patients' somatic problems but to also address their psychological and spiritual needs.

Good health care is likely to be holistic but holistic health care, as it is marketed at present, is not necessarily good. The term 'holistic' may even be a 'red herring' which misleads patients. What matters most is whether or not any given approach optimally benefits the patient. This goal is best achieved with effective and safe interventions administered humanely —





A NEW MODEL OF HOLISTIC HEALTHCARE

WHB ACADEMY TRAINING CENTERS

regardless of what label we put on them.

A definition of holism might state: nothing can be fully understood unless one sees the whole system of which it is part – and the whole is always more than the sum of its parts.

When one hears "holistic health", s/he thinks of alternative medicine, naturopathy, or other Eastern-inspired health trends...It's at least partly right.

Holistic Health does incorporate complementary therapies that have been scientifically proven to work, and like alternative medicine, it focuses on wellness and prevention, rather than just treating diseases. But Holistic Care is about more than integrating Eastern and Western medicine. It's a more comprehensive and personalized way of thinking about wellness, about wellbeing.

Treating the Whole You

It's time to replace over-reliance on pharmaceutical 'magic bullets' with diverse approaches for creating health. We need to support well-being, self-care in chronic disease and the well-being of health-workers. Above all we have to embrace effective and sustainable solutions for the millions who need more than biomedicine alone can offer.

Holistic health is about caring for the whole person — providing for a

patient's physical, mental, spiritual, and social needs. It's rooted in the understanding that all these aspects affect one's overall health, and being unwell in one aspect affects you in others. Holism is more about relatedness rather than separation, taking a broader view rather than reducing individuals to disease labels. A holistic approach recognises that our relationships, our culture, our immediate and global environment all profoundly affect our health and well-being.

Doctoring Outside the Box

Holistic Care providers address a wide variety of wellness concerns, and they use a wide variety of clinically proven therapies — from surgery and pharmaceuticals, to dietary changes and exercise plans, to psychological and spiritual counseling. They might also recommend evidence-based alternative therapies, such as massage, acupuncture, and yoga, for supportive care.

Making Wellness Doable

Wellness is a big, important goal, and it can feel overwhelming. You know you should eat healthier foods, drink more water, hit the gym more often, sleep eight hours a night, give up your vices, and make more time for rest and relaxation. But the business of work and life can make it hard to





A NEW MODEL OF HOLISTIC HEALTHCARE

WHB ACADEMY TRAINING CENTERS

prioritize self-care, and the more you think about what you "should" be doing differently, the more daunting wellness can seem.

The WHB Holistic Integrated Medicines Doctors empower patients with the education and motivation to make better choices. Rather than suggesting a long list of lifestyle changes, they include patients in the conversation and help them determine which changes would make the greatest impact on their health. They help people set wellness goals and then provide them with resources — whether that's a personalized plan or a referral to a specialist.

ICHIHP - International Classification of Holistic Integrated Health Practices

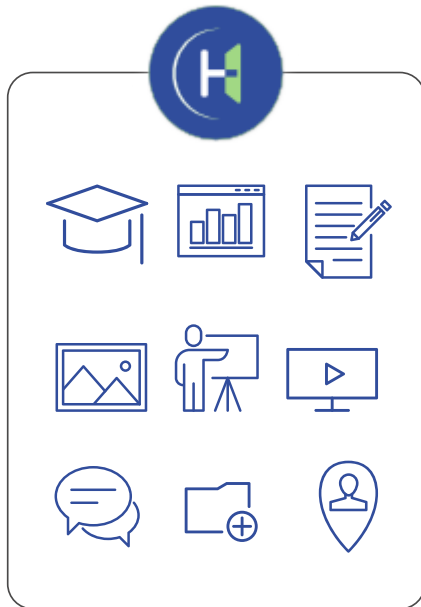
The WHB recognizes that high-quality healthcare depends on high standards of education. This applies to both natural treatments and any other medical and healing discipline and the WHB Training Subcommittee works to support WHB Academy Centers in all WHB member states in achieving the best possible training standards for the definition of a new professional figure, the HIMD - Doctor of Holistic Integrated Medicines.





WHB ATTACHMENTS

WHB ATTACHMENTS



- 1** Mission & Vision
- 2** New National Health & Wellness System
- 3** Mixed Payment System
- 4** Q&A: Questions and Answers - WHB Forum
- 5** WHB: Why Connect with Us
- 6** Partners
- 7** Comments from FOUNDERS



WHB MISSION

WHB MISSION

The WHB is a non-profit making international non-governmental organization having a scientific aim, with activities such as research, study, information, consultation, promotion and services.

Its aims are:

- universal order based on dignity, solidarity, human rights and freedom of communication;
- undertake and promote research and study on health by transnational associative networks;
- collect and distribute documentation on health by a private cloud platform; international cures, protocols, therapies etc.; international organizations and associations, governmental and non; transnational cooperation;
- collect and distribute data on the various researches; patents; meetings organized by international bodies;
- set up an international committee representative of health professionals boards to agree on health, professional education and practice policies;
- help countries, jurisdictions, and institutions to introduce, implement, and extend the WHB role wherever possible;
- encourage activities promoting a new network of professionals for care, health and wellbeing of humankind by non-governmental networks, as well as intercommunication between people working in international framework and in inter-associative cooperation;
- promote a new collaborative international medical professionals and sanitary partners creating a network for a new, holistic and integrated medical service;
- promote personalized cure, under the responsibility of the care-giver;
- promote a network of researches, patents and productions of new health food supplements, nutraceutical products, technologies, technological devices;
- study, categorize, analyze, compare and illuminate world problems as perceived by international organizations;
- organize and promote events with the aim of spreading all new collected data;
- promote a network of farms and CEA facilities for productions and transformation of plants for pharmaceutical use for the extraction of the main and secondary metabolites needed by pharmaceutical laboratories of the network.



WHB VISION

WHB VISION

The subject of philosophy is very ancient. The word means “the love, study or pursuit of wisdom”, or of knowledge of things and their causes, whether theoretical or practical.

All we know of science or of religion comes from philosophy. It lies behind and above all other knowledge we have or use.

We at the WHB are only interested in how to show Man how he can set himself or herself free, happy and healthy. Every person's main concern is their own state of health...we at WHB know how to alleviate and heal their ailments and how to bring them into a state of awareness so they stay healthy. That is WHB Mission.

A philosophy can only be a route to knowledge. It cannot be knowledge crammed down one's throat. If one has a route, he can then find what is true for him.

This, of course, is not very popular with those



who depend upon the slavery of others for their living or power. But it happens to be the only way that has been found that really improves an individual's life.

Suppression and oppression are the basic causes of depression. If you relieve those, a person can lift his head, become well, become happy with life.

And though it may be unpopular with the slave master, it is very popular with the people.

Common Man likes to be happy and well. He likes to be able to understand things. And he knows his route to freedom lies through knowledge. “Know thyself—and the truth shall set you free”.

We do not have an infinity of time to change and clear this planet. We are actually engaged in a race against time.

This society is on a downtrend, on a dwirling downward spiral, and the rising statistics of crimes, drugs, economic troubles, wars around the world show it.

We have, right now, the opportunity which can create a new civilization here on Earth. It is our responsibility to make this opportunity known and to get it available and applicable.

Let's make it happen.



THE NEW WHB NATIONAL HEALTH & WELLNESS SERVICE

THE NEW WHB NATIONAL HEALTH & WELLNESS SERVICE

DEVELOPMENT OF TERRITORIAL ASSISTANCE IN THE WHB NEW NHS

The New National Health Service (NNHS) of the WHB GHA-WW is based on three fundamental principles: **universality**, **equality** and **equity**. The pursuit of these principles requires strengthening its capacity to operate as a community-based system, designed for people and with people.

Although starting as a private service, with the introduction of the Mixed Payment System (current currency, cryptocurrencies, complementary currencies, barter and time banking) it is intended to bring the three aforementioned principles into being, by applying them to the highest level of coverage and healthcare service that can be provided to all citizens, without any income distinction.

In this perspective and context, there is the need to strengthen the territorial healthcare services provided by the current public NHS, reducing inequalities and, at the same time, building a shared and homogeneous service delivery model across the national territory.

Primary care represents the first gateway to a health service. It represents the most inclusive, equitable, convenient and efficient approach to improving the physical and mental health of individuals, as well as the well-being of society. In 2014, the Directorate General of the European Health Commission defined Primary Care as: "the provision of universally accessible, integrated, person-centred services in response to the majority of individual

and community health problems in the life context. The services are provided by multi-professional teams, in collaboration with patients and their caregivers, in the contexts closest to the community and individual families, and play a central role in ensuring the coordination and continuity of assistance to people".

The WHB-GHA NNHS therefore pursues this vision through provincial activities, planning, strengthening and valorisation of territorial services, in particular:

- through the development of local structures, such as "Community Houses", as a point of reference for responding to health and social-health needs of health relevance for the reference population;
- through the strengthening of home care so that the home can become the privileged place of assistance;
- through the integration between health and social care and the development of multi-professional teams that take care of the person in a holistic way, with particular attention to mental health and conditions of greater fragility ("Planetary Holistic Health");
- with systematic logic of initiative medicine and taking charge, through the stratification of the population by intensity of needs;
- with digitised service models, useful for identifying the people to be assisted and managing their pathways, both

for home assistance, using telemedicine and telemonitoring tools, and for the integration of the professional network operating in the area and in hospital;

- through the enhancement of co-planning with users;
- through the valorisation of the participation of all community resources in different forms and through the involvement of the various local actors (Local Health Authorities, Municipalities and their Unions, professionals, patients and their caregivers, Third Sector associations/organisations, etc.).

In this context, the pharmacies affiliated with the NNHS, located uniformly throughout the national territory, constitute local health facilities, and represent a fundamental and integral element of the New National Health Service. In particular, the widespread network of pharmacies affiliated with the NNHS ensures daily provision of health services to safeguard the health of citizens: the dispensing of the drug must be included in this context, for chronic patients the possibility of using a personalized access service to drugs, pharmacovigilance, the activities reserved for the so-called "Service Pharmacies" and the assignment of new functions including the administration of diagnostic tests to protect public health.

The WHB, through the GHA-WW defines organizational models, standards and the main themes connected to the



THE NEW WHB NATIONAL HEALTH & WELLNESS SERVICE

DEVELOPMENT OF TERRITORIAL ASSISTANCE IN THE WHB NEW NHS

interventions envisaged within the "Proximity networks, structures and telemedicine for local healthcare", which are considered from a broader and more integrated perspective also through analysis of tools and transversal roles preparatory to the strengthening of territorial assistance.

Knowledge of the epidemiological profile and the indicators correlated with the needs and health outcomes of the assisted population, constitute a fundamental aspect within the district governance system. The development and implementation of systems for measuring and stratifying the population on the basis of risk will, therefore, constitute and feed a platform that contains information on the characteristics of the population assisted in a given territory, on the prevalence of chronic pathologies, on the fragile population. This platform will also include indicators relating to the quality of healthcare and adherence to guidelines for some specific pathologies and will support proactive surveillance programs as part of the plan to strengthen local healthcare.

The adoption of a common stratification model throughout the national territory will allow the development of a uniform language that aims to guarantee equal access and homogeneous care. Furthermore, population stratification must aim at a holistic assessment of the individual's needs, in order to measure the "level of social care need" using information on the clinical and social condition and on further **individual needs and preferences, taking into**

account his cultural and philosophical inclinations.

This stratification model, which uses information relating to the person's clinical, healthcare and social needs, has the aim of identifying appropriate, sustainable and personalized interventions that are defined in the "Personal Health Project" (PHP). This tool supports taking charge of the person in holistic terms ("Planetary Holistic Health") and allows not only the management of social-welfare needs but also to carry out process and outcome assessments relating to each individual regardless of the level of risk. This approach allows an evaluation that is divided into two levels:

- that of the individual person, with whom the "Personal Health Project" and related interventions are defined;
- that of the population, useful for the purposes of planning and verifying the results achieved by the health and social-health services in the reference community.

The territorial governance system set up in this way makes it possible to identify intervention priorities, with particular reference to the continuity of care for individuals in chronic/frail conditions and disabilities that involve the risk of non-self-sufficiency, also through the integration between the social system and healthcare.

The "Personal Health Project" is the common thread that represents the history of the person and their clinical-social-assistance needs, in conjunction with the social services, following them even before they develop a pathology, from the moment they are identified as a carrier of risk factors or

starting from the first contact with the NNHS, feeding the relevant personal Electronic Health Record in a coherent and timely manner.

The definition of the "Personal Health Project" is based on the constant evaluation of health needs and implies organizational and management systems capable of constantly evaluating clinical care interventions and support services, guaranteeing the participation of multiple professionals for the entire duration of the management, without interruptions between care settings, and based on the proactivity of the WHB-GHA NNHS.





GHA-NNHS REGIONAL DISTRICT

GHA-NNHS REGIONAL DISTRICT

It has been made a priority to implement the offer of territorial proximity facilities to the citizen and coordinate the integration between the various health, social-health and social-welfare structures present in the area, in order to ensure a coordinated and continuous response to the needs of the population, as well as uniformity of levels of assistance and plurality of the offer.

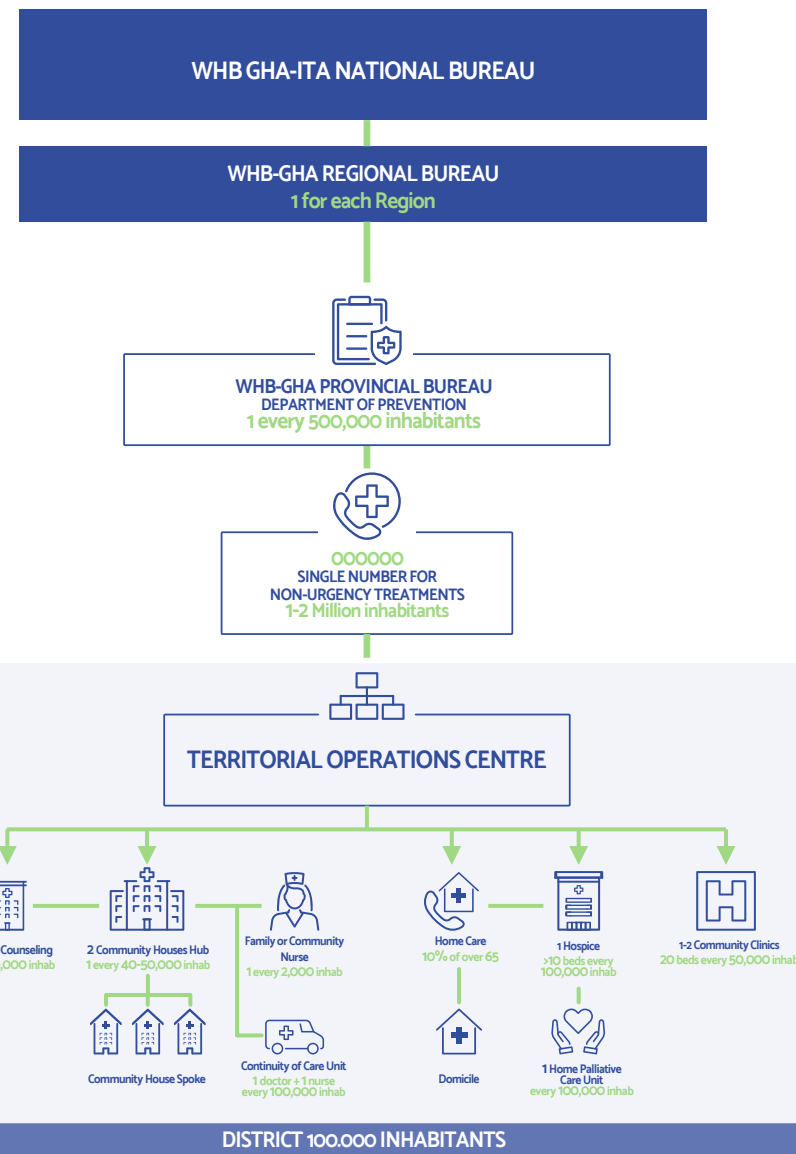
The introduction of these WHB multipurpose structures is therefore aimed at providing citizens, within a single healthcare network with the hospital system, the set of Essential Levels of social and healthcare assistance in their unity of prevention, treatment and rehabilitation. These structures represent points of reference for primary care with characteristics of extensive care and integrate the hospital system characterized by care intensity, orientation towards performance productivity, efficiency and excellence. The main mission of these structures is to take care of people from the moment of access, through welcoming citizens, collaboration between professionals, sharing holistic care paths, autonomy, professional responsibility and the valorisation of skills, even with the aim of eliminating improper access to hospitals

and/or improper treatments and drugs. Furthermore, the adoption of a model based on functional integration between the different health service providers allows for a more positive use of human and professional resources for the success of the structure itself.

The district has approximately 100,000 inhabitants, with variability according to population density criteria and orographic characteristics of the territory.

Another added value for the definition of Community Homes and Community Hospitals is the integration with social services, which represents one of the cornerstones of the new system of functions created by community houses.

Finally, the computerization of clinical-care processes favors an integrated approach to patient care and allows the care provided to be measured and evaluated. The development of digital healthcare finds in Telemedicine one of the main areas of application capable of enabling forms of assistance also through the structural and organizational redesign of the NNHS network.





MIXED PAYMENT SYSTEM

MIXED PAYMENT SYSTEM

So many tricks have been used to manipulate economic systems, and so many political influences exist, that people are often very hard pressed trying to bring about solvency to conduct their activities over the course of their life. Money can be manipulated in a thousand different ways.

Money **HAS** to represent something. It can represent gold or beans or eggs and cheese, or hours of work or specialized/general help, or grandma's dresser, or almost anything, as long as the thing it represents is real. Whatever it represents, the item must be **exchangeable**.

There must be enough of the thing that money represents. By making the thing scarce, money can be manipulated, and prices sent soaring. Economics through various manipulations, can be made into the most effective **trap** of the modern **slave master**.

Money, in short, is a passionate subject. In the modern day, the lid is coming off the economic pot, which is at a high boiling point. Too many **speculators**, too many **dishonest** men generating too much hate, too many **tax abuses**, too many propagandists shouting down money, too many fools, all add up to an explosive economic atmosphere.

A group must be very clever to survive such a period. Their economic arrangements and policies must be fantastically wise, well-established and followed.

At the time of writing, the only real crime in the World is for a group to be without money. That finishes it. But with enough money it can defend itself and expand.

Yet if you borrow money, you become the **property of bankers**.

If you make money, you become the **target of tax collectors**.

But if you don't have it, the group dies under the hammer of **bankruptcy** and worse.

So WHB always makes it the first condition as a group, to make its own way and **be prosperous** from its own efforts.

The key to such prosperity is **EXCHANGE**.

One exchanges something valuable for something else valuable. An exchange can occur in many ways. Currently it is done with money. Thus, by bringing the problems of viability down to the rock-bottom basics of exchange, one can cut through all the fog about economics and money, and be practical and effective by understanding the principles of **EXCHANGE** and applying them.






The fundamental is to realize that **EXCHANGE** is the basic problem. Then, and only then, can one go about **solving** it.

The WHB has thus decided to start solving the problem of "scarcity" of money by introducing the **Mixed Payment System** for its services and its Members' services, and spreading broadly worldwide the knowledge about the basic **EXCHANGE** and **SOLVENCY** economic principles, so as to free more and more people from the stranglehold of money in the hands of bankers.

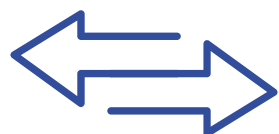
MIXED PAYMENT SYSTEM

THE WHB WANTS EVERY PERSON IN THE WORLD TO HAVE ACCESS TO **THE BEST** HEALTH AND WELLNESS CARE AND TREATMENTS, GOODS AND WHB SERVICES AND LIFE IMPROVEMENT COURSES.

THE WHB INTENDS TO GIVE PEOPLE THE **POSSIBILITY TO DECIDE** THE METHOD OF PAYMENT FOR: RESERVATION TICKETS, LABORATORY TESTS, MEDICINES OR REMEDIES, SPECIALIST EXAMINATIONS, PROFESSIONAL SERVICES, HOSPITAL ADMISSIONS, MEDICAL DEVICES, WELLNESS TREATMENTS, PRODUCTS, GOODS, WHB COURSES AND SERVICES, ETC. CHOOSING BETWEEN:

-  MONEY IN EXISTING CURRENCIES (EURO, DOLLAR, RUBLE, RIAL, YUAN...);
-  % EQUIVALENT IN COMPLEMENTARY CURRENCY (E.G. CRYPTO);
-  % EQUIVALENT IN BARTER PRODUCTS;
-  % EQUIVALENT OF TIME BANKING CREDITS FOR SERVICES;
-  VARIOUS COMBINATIONS OF THE ABOVE PAYMENT MODES.

NATIONAL BARTERING NETWORK



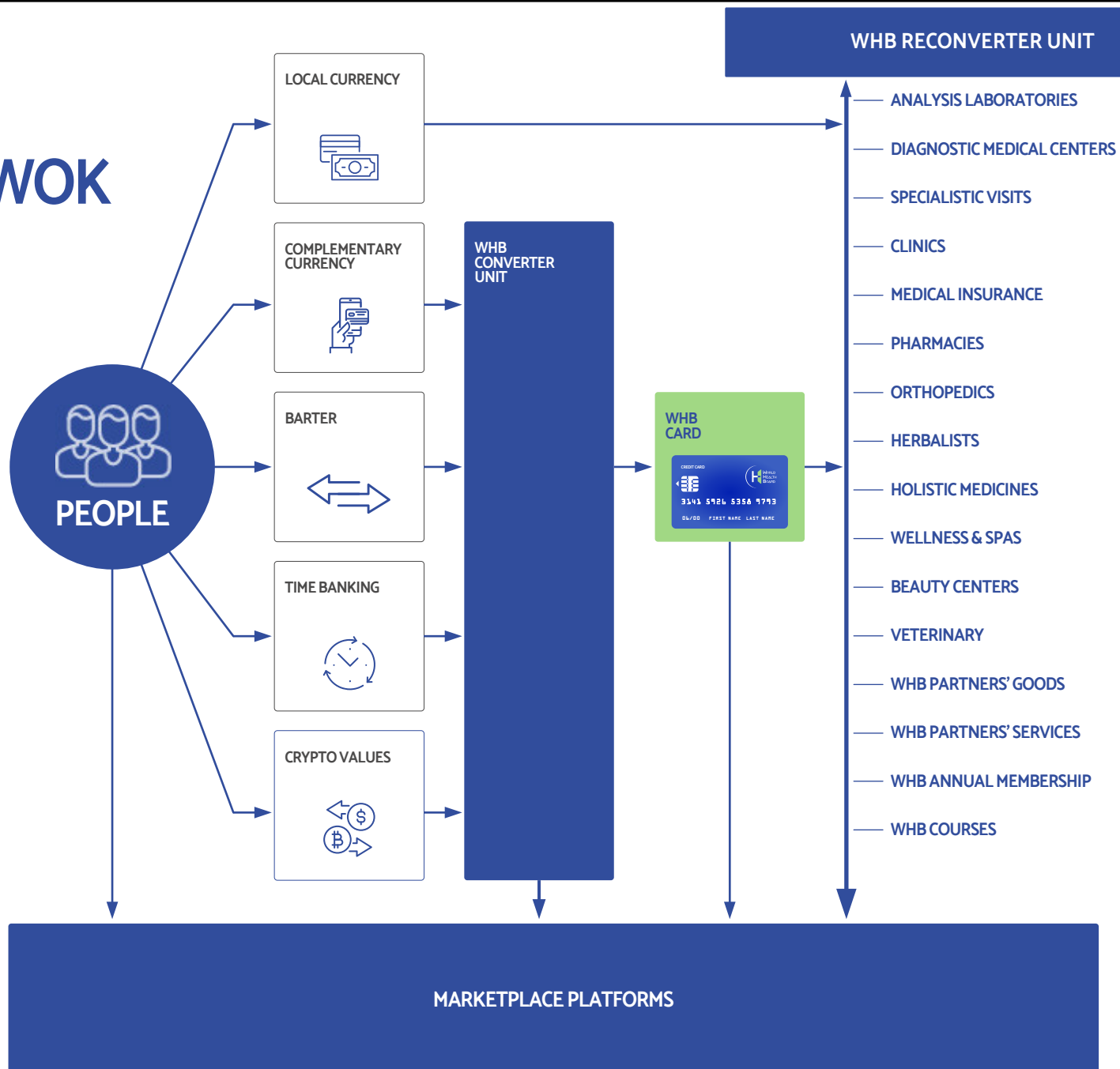
NATIONAL BARTERING NETWORK: deals with the coordination of the

network that puts back on the market, that which is received from WHB members in a form other than the current national currency.

CONVERTER UNITS NETWORK: is housed in all branches of the WHB LOCAL BUREAU network. It deals with receiving and valuing what members give in payment for WHB goods and services. It assigns them a WHB Credit value, charges it on the member's personal WHB CARD, and then resells or donates them at the local WHB outlet, or via the web barter platform.

TIME BANKING: everyone can give some of her/his time and have WHB Credits or services in return. All professionals, businesses, artists, artisans, farmers, freelancers, normal people, young people, retired, elders - everyone can exchange hours of their time for all kinds of services.

COMPLEMENTARY CURRENCY: money in circulation within a community. It is called "complementary" because it remains outside the globalist systems.



PAYMENT SYSTEM MEANING

Complementary Currency, Time Banking and Bartering from WHB Members will be transformed into **WHB CREDITS** that are representative of the **WHB EXCHANGE POWER**.

All kinds of Complementary Currency will have the same 1:1 value. The value of goods and services will be attributed by the WHB GOODS & SERVICES EVALUATOR, responsible for attributing the value of products and services offered by Members, depending on their state and nature, and in relation to a periodically updated table based on real market values.

Thanks to this “innovative” but very old payment system, WHB aims to bring healthcare, treatment and wellness, healthy food and ethical products, to everyone worldwide and, above all, to act in every State at the welfare level, freeing people from the “Élites’ money”.

The WHB Converter Unit has been designed intentionally to address specific issues as to increase financial stability for communities that do not have access to financial capital, and for adjusting peoples' spending behavior.

Its aims include:

- resocialization and emancipation;
- “lifeboat” currencies;
- to increase financial stability;
- to reduce carbon emissions, by encouraging localisation of trade and relationships;
- to encourage use of under-used resources;
- to recognise the informal economy;
- promote local businesses.

A Converter Unit is housed in all branches of the WHB LOCAL BUREAU network. It deals with receiving and valuing what members give in payment for WHB goods and services. It assigns them a WHB Credit value, charges it on the member’s personal WHB CARD, and then resells or donates them at the local



WHB outlet, or via the web barter platform.

The Reconversion Unit, with its desk inside each WHB Local Bureau, deals with:

- receive WHB Members who bring to the center their products, services and complementary currency to “recharge” their personal WHB Card with WHB Credits;
- receive, evaluate and adequately store all products;
- attribute correct corresponding Credits and loading onto the Member’s personal WHB Card;
- redistribute of what was received by Members in the Local Bureau Emporium or on the international e-commerce, bartering and time banking platform;
- load on all the members’ cards the value corresponding to € 30.00 of the WHB complementary currency, weekly.

PAYMENT SYSTEM

QUALITY CERTIFICATION



WHB has an internal organ for organic-food certifications that has its own procedure of control and conformity to its WHB Chart of Protocols.

The use of WHB CREDITS as an alternative, may just prove to partially solve the problem of organic food security, since consumers can be reassured of the quality of their products with the reconversion mechanism imposed on merchants. Other than the WHB Members who can choose to barter their foods for having WHB Credits, Local professionals and food producers can be chosen to be part of the WHB Local Bureau network if they respect the ecological and social objectives (part of the sustainable development goals) set by WHB. **All WHB Members have access to several courses for having all basic food-quality requirements to have WHB CREDITS.**

From interactions between participants of the network, a **WHB Guarantee Seal** defines the different ecological and social values promoted by the WHB via its Local Bureau and the rules by which the members must play and respect to be part of the network.

In the WHB network, one of the conditions is to comply with the production of goods and services within the network, following all the WHB Chart of Protocols.

Any professional who wishes to take part in the WHB network needs to submit its registration by indicating how it fits with the values of the association or how it can achieve/help to achieve objectives set by the WHB. A decision-making committee will then give its [dis]approval to the professional. Members are then controlled on a regular basis before granted permanent permission to be part of the network. With the WHB chart, the decision-making committee and the regular control of members, the local mixed payment system acts as a label of quality for consumers. The quality of products and the ecological and social values that they carry is guaranteed for end users. The Local Bureaux are the entities that guarantee the aforementioned characteristics of the products bartered or sold in the network. For consumers, buying certified organic food with an additional label guarantee from the WHB, could serve as a way to offset the non-observable quality trait of foods bartered on the WHB bartering & time banking platform.





WHB Q&A

Q1. What is the Mission of the WHB?

A. The mission of the WHB is to improve the quality of life for everyone on the planet, by supporting fully informed, voluntary access to all ethical health care and treatment options and practitioners; to ensure individual sovereignty over mind, body and soul.

Q2. What is the Vision/End State of the WHB?

A. To establish a new national wellness system and an international body of reference and representation, which includes: integrated medicine; traditional local medicines; holistic medicines and treatments; the exchange of scientific studies between all Research Centres; the production of drugs, phytopharmaceuticals and remedies; and the cultivation of plants, necessary for the extraction of the primary and secondary metabolites, with the agricultural technique in a controlled environment (CEA).

Q3. Who are the various stakeholder groups who will participate in, benefit from, or be impacted by, the WHB?

A. Stakeholders fall into 6 main groups:

- Medical and healthcare practitioners and those associated with providing healthcare services, across all modalities;
- Researchers and scientists including Research Centres;
- Suppliers of healthcare products and

ingredients, including raw materials and plants, medicines, foods, supplements, medical devices, and equipment;

- Patients or individuals who seek healthcare advice and treatment options;
- Individuals and organisations providing services for the establishment and ongoing operation of the legal, financial, HR, administrative, communications, technology, and project management frameworks, systems and processes that will enable WHB to operate;
- External parties such as government agencies and regulators, Private-Public organisations such as the WHO, WEF, UN etc, with whom the WHB may need, or choose, to interact from time to time, as needed.

Q4. What is the Strategy to achieve the WHB Mission and Vision?

A. The WHB Strategy is to establish and maintain:

- a global network of individuals and associations, to develop and share healthcare research and treatment protocols, services and products, with the oversight of independent Ethics committees;
- an organisation structure, operating model, and communications channels with all stakeholders, to efficiently provide ethical healthcare services from all modalities to people of the world who

voluntarily seek fully informed, healthcare advice and treatments.

Q5. How will the WHB be funded?

A. The WHB will be funded from:

- Membership fees.
- Crowdfunding.
- Donations and legacies.
- WHB Courses.
- E-commerce sales and transaction fees.
- Promotional items sales.

Q6. What Services/benefits will the WHB offer to deliver the Strategy?

A. The vision for WHB is that it will eventually offer a significant range of services. Detailed information on WHB services will be provided following discussions by working groups to be established on a range of topics. In the meantime, the following lists provide a high-level overview of some key services and benefits for members of the WHB.

For healthcare practitioners and associations:

- Enhanced credibility as a member of WHB;
- Gain access to WHBs global expertise and database;
- A seat and a voice at a global policy making table;

- Help define various health and wellness practitioners, and build their leadership and strengthen their professions globally;

- Improve working conditions and health outcomes from Research Centres in member countries;

- Help shape the global health and psychophysical and spiritual wellness practice strategy;

- Host, participate in, and get reduced rates at WHB events around the world;

- Share knowledge and learn from others;

- Receive recognition and recognise the work of others;

- Contribute to, and obtain privileged access to critical and current information;

- Benefit from continuing education offers.

For Suppliers & Researchers:

- Preferred supplier status with member organisations;

- Platform for sharing product information;

- Potential to collaborate on research and development.

For Individuals Public:

- Access to all modalities and member practitioners;

- Maximum respect for one's own wishes expressed in the Living Will;





- Fully, informed consent for all treatments;
- Opportunity for individual case to be discussed by a team of professionals from different holistic and integrated medical & wellness specialties;
- Range of payment options for service;
- Access to join the WHB economic and social development networks.

Q7. How will the WHB be organised/structured?

A. Setting up a new global organisation is a complex undertaking which requires significant planning and resources. A proposed organisation structure has been prepared for consideration. This structure will be implemented, and if necessary, refined, over time, as more and more individuals and associations join the WHB.

The 2 key tenets of the proposed structure are a number of 'Coordination Committees' and 'Ethics Committees'. These committees will sit at the local, district, regional, national, continental and international levels.

Each Coordination Committee deals with day-to-day management and has two key functions:

- to PROVIDE input/ideas on projects or initiatives that are required, which will be forwarded up the chain (e.g., to district, regional, national, continental, or international level as appropriate) for

assessment and decision-making,

- to RECEIVE directions and implement action plans for projects or initiatives that have been agreed for implementation up the chain (e.g., from district, regional, national, continental, or international level, depending on the action plan).

An Ethics Committee will oversee each Coordination Committee. An Ethics Committee is an independent committee that inspects and regulates to maintain the highest standards of ethics. Its purpose is to obtain completely ethical, stable and functional operational units of management. It includes a Department of BioEthics, which deals with the application of the highest ethical standards in the fields of treatments, therapies, and research and experimentation.

Q8. How will the WHB be governed?

A. The Coordination Committees are made up of representatives of all of the Associations and Organisations that have joined, and will join, the WHB. As already outlined above, a key governance measure in the structure will be the Ethics Committees at each level.

In addition to the various Ethics Committees, the WHB will be governed by the International Bureau, and the Organisation Bureaux.

The International Bureau is responsible for providing strategy and tactical plans to each level in the WHB. This group will

coordinate strategic and tactical directives for the entire organisation.

The Organisation Bureaux is the central point of tactical management for all levels in the structure, ensuring that all plans are executed and carried out.

The organisation structure is also supported by provision of a Central Computer Bank that provides the WHB network and various computer systems needed to operate the WHB. In addition, an International Finance Office will also operate under the supervision of the Ethics Committees and direction of the International Director of Finance.

Q9. How is the WHB governance different to the WHO?

A. The latest proposed changes to WHO regulations seek to enforce regulations on member states.

The WHB, like any other organisation, cannot operate without governance. Governance is required for any organisation to survive and thrive, but it becomes even more important, the larger the organisation.

The key difference between WHO and WHB, however, is that firstly, WHB membership is voluntary. If you don't like any policies or practices of the WHB, you can simply cancel your membership and conduct your affairs in the way that works best for you. This applies to practitioners, suppliers, or individuals/public.

Secondly, all services provided are optional. No member is required to access all, or any, of the services. Each person is expected to exercise their own free will in every decision about the services and information that they source from WHB.

WHB as an organisation must have a governance structure to operate effectively, but this does not mean that members are forced or coerced to do anything against their own free will. This is a fundamental and important difference between the WHO and the WHB.

Q10. In my humble opinion, the globalists intend for life as we know it to be ended within the next 2-4 years. So building the movement to fight that and acknowledging the real enemy (which we see in every institution) is the first priority, not to try to regain business as usual?

A. The WHB does not intend to follow the old paradigm, but neither do we intend to 'throw the baby out with the bath water'. If the existing System has to date brought success to 'evil powers', it is because the system has a solid foundation.

It is necessary to distinguish between STRUCTURE, FUNCTION & GOVERNANCE:

- STRUCTURE - gives SHAPE and SOLID lines of communication and information flow to WHB management. The WHB will grow to tens of thousands of employees, millions of professional members, and 100





times more private/patient members, who can all receive impeccable services via the 'flat organization' structure of Coordination Committees made up of representatives of the member Associations.

- **FUNCTION** - follows the directives elaborated by the various committees within the Structure, for the perfect **ALIGNMENT** in **COHERENT** form of all energy flows...of everything and everyone...towards the achievement of the Vision through the Mission.
- **GOVERNANCE** - is what **MAKES THE DIFFERENCE** between the new and the old paradigm. Firstly, membership and participation in WHB services is completely **VOLUNTARY**, which is opposite to the WHO's model to 'enforce' their directives and 'control' member states. Secondly, the oversight, support and direction of the various **ETHICS COMMITTEES**, guarantees compliance with the high standards and values expressed by the objectives of the WHB.

In the **FIRST PHASE** we will have to live with the old paradigm without its forces focusing on us. This is what we mean by **'MIXED/HYBRID PHASE'**. It is a simple strategy. Having agreed/unified the objectives that we want to achieve as a coherent force, we need to **CREATE** and **GIVE CONCRETE SHAPE** to the **NEW WORLD...OUR new world...and at the same time implement everything possible to counter the 'evil forces'.**

In Italy the WHB is carrying out some projects, which will then be re-purposed in every other country after the appropriate modifications to adapt them to their current legislative provisions:

- the creation of a 'safety net'...an economic net...for professionals who could lose their jobs;
- the creation of a blood transfusion network managed by our trusted personnel to ensure the right to precautionary pre-deposit autologous donation;
- the creation of a supply network of 'safe' products, medicines and sanitary/health materials;
- the creation of a network of general practitioners and nurses who can intervene at neighbourhood level, even in times of possible new impediments to free movement;
- the creation of a switchboard with a unified '888' number for emergency management.

WHB have an Action Plan to overcome the forces of evil that have infiltrated world health systems.

Q11. Only associations can join?

A. Everyone on the planet can join the WHB. The WHB intends to take care of the coordination of **ALL** forces that want to achieve a concrete change to the current

reality - Healthcare, Education, Work, Home, Children, and the Elderly. WHB will collaborate with **EVERYONE** by providing support and cooperation.

The WHB structure can be operational right from the start, for both doctors and the public. The various and numerous networks that will be set up and managed, and above all the network for the mixed method of payment through credits, will bring a massive influx of registrations, which will be seen worldwide as a power difficult to break down through threats and blackmail.

The WHB intends to provide its members with a condition of complete **RESILIENCE**, absolutely regardless of the embezzlement and undermining tactics currently being inflicted on the population. Only by building a **CONCRETE** alternative, guaranteeing maximum coverage of the fundamental needs of the individual and his immediate circle, can the unstoppable wave of change be triggered.

Q12. How people would be protected from their governments / WHO future mandatory attempts to impose their protocols?

A. Only a coordinated cooperation will permit WHB to build a safe area for everyone who shows a dissenting spirit. In our Road Map, the WHB intends to open as many 'Free Spirits' Clubs as possible to grant that safe area where people will find help and supplies, even during the possible and feared coming harsh times.

They will be presented as harmless recreational clubs, where there will also be rooms for the 'Collection & Conversion Unit' of Bartering and Time Banking, and for first aid and home health care units.

All together we will be able to grant a big network through which people will be protected from the WHO mandatory protocols. The union of the people will be our victory, and we will unite them using spiritual and physical health and well-being.

Q13. Is this project a start up? Does the project start right now?

A. The WHB could be considered to be a Start-Up, only because it's in its first operational year, but our International Healthcare connections began in October 2022. The WHB project started in April 2023.

Q14. I am grateful to join your action to be light and to resurrect the Medicine Art!

A. The WHB wants to be the most complete platform for Integrated Holistic Medicine, supporting its professional members in the creation of diagnostic teams and promoting training with a very effective, innovative method. ■



WHY CONNECT WITH US WHB SERVICES

WHB SERVICES

BENEFITS OF BECOMING A WHB MEMBER - NATIONS

- Organizational cooperation.
- Access to an International Intergovernmental Negotiating Body.
- Humanitarian aids.
- Welfare actions.
- Cooperation for the economic development of the weakest and most sensitive social groups.
- Respect for the general context & needs (national, historical, cultural, religious, geographical and political), the local context & needs (the institutional and non-institutional actors active in the region), the immediate context & needs (needs, expectations, limits and local resources).
- Respect and support for traditional local and popular medicines and related natural remedies.
- Promotion of the enjoyment of the highest attainable level of health for all people.
- Creation of various socio-economic networks.
- Delux health coverage even for the most disadvantaged social groups.
- Creation of resilient communities.
- Raising levels of competence and awareness in the population.
- Health and surgical coverage and prevention, even in the most remote areas.



WHB SERVICES

BENEFITS OF BECOMING A WHB MEMBER - PROFESSIONALS

- Improve the credibility of your professional office/study and your organization as a recognized member of the WHB.
- Have a seat and a voice at the highest decision-making tables in the world.
- Help define what a Hippocratic doctor, a healthcare professional, a holistic practitioner and a psychophysical and spiritual well-being practitioner is, to build the leadership of all practitioners and strengthen professions in the field of health and psychophysical and spiritual well-being throughout the world.
- Improve the working conditions and results of Research Centers in your country and beyond.
- Help shape the strategy of global health, holistic, mental, physical and spiritual well-being practices.
- Host, attend and receive reduced rates at WHB events around the world.
- Get access to the global WHB experience.
- Share knowledge and learn from others.
- Receive recognition and give recognition to the work of other members.
- Contribute and gain privileged access to critical and current information.
- Take advantage of continuing training courses offered.



WHB SERVICES

BENEFITS OF BECOMING A WHB MEMBER - PUBLIC

- Choice of professional to be treated by.
- Own case discussed by an interdisciplinary team made up of professionals from different holistic and integrated medical specialties.
- Maximum respect for one's wishes expressed in the Living Will.
- Deluxe health insurance coverage.
- Access to all the services of the WHB Health Villages.
- Choice of payment method for all products and services.
- Becoming part of the WHB economic and social development networks.



BENEFITS OF BECOMING A WHB MEMBER - COMPANIES

- Becoming part of the Official Suppliers List of the WHB Organizations.
- National and International Visibility.
- Ethical and Qualitative International Certification of its products and services.
- Access to all WHB services for its employees.





WORLD HEALTH BOARD **PARTNERS**



Dr Vera Sharav (medical activist, is the founder of the **Alliance for Human Research Protection**)



Dr Peter Andrew McCullough, MD, (MPH TM)



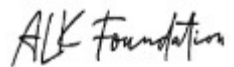
Dr Paul Elias Alexander, MHS, MSc, PhD (Bachelors - Hon)



Dr Roger Hodgkinson, MA, MB, FRCPC, FCAP, (pathologist)



Dr Tess Lawrie, MBBCh, PhD (co-founder of WCH)



Dr h.c. Andreas Ludwig Kalcker (German medical writer and founder of **ALK Foundation**)



Mr George Della Pietra (founder of **SafeBlood Donation**)





Dr Gerry Brady (founder of **BOOM Finance and Economics**, CMN news...)



Dr Rima E. Laibow, M.D. (Medical Director of **Natural Solutions Foundation**)



Drs Walter Weber, Beate Sibylle Pfeil, Dirk Volker Seeling (World Health Alliance - WHE ALL)



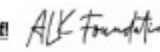
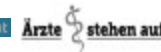
Dr Anne O'Reilly, MBChB FRNZCGP (member of **WCH** and **NZDSOS**)

Prof. Dr. Giovanni Vanni Frajese (Vice president of **ContiamoCi**)

Dr. Mauro Mantovani (**Imbio** Research and Development Director; Imbio Academy Scientific Director)



Shari St. Louis (Co-President of **CHD - Childrens Health Defense Canada**)





Dr Zafeiria Kalaletri (Greek Medical Freedom Alliance)

Dr Andreas Sam Rallis Ph.D (independent Scientific Researcher)

Dr Paris Pappas - Physician Assistant by training



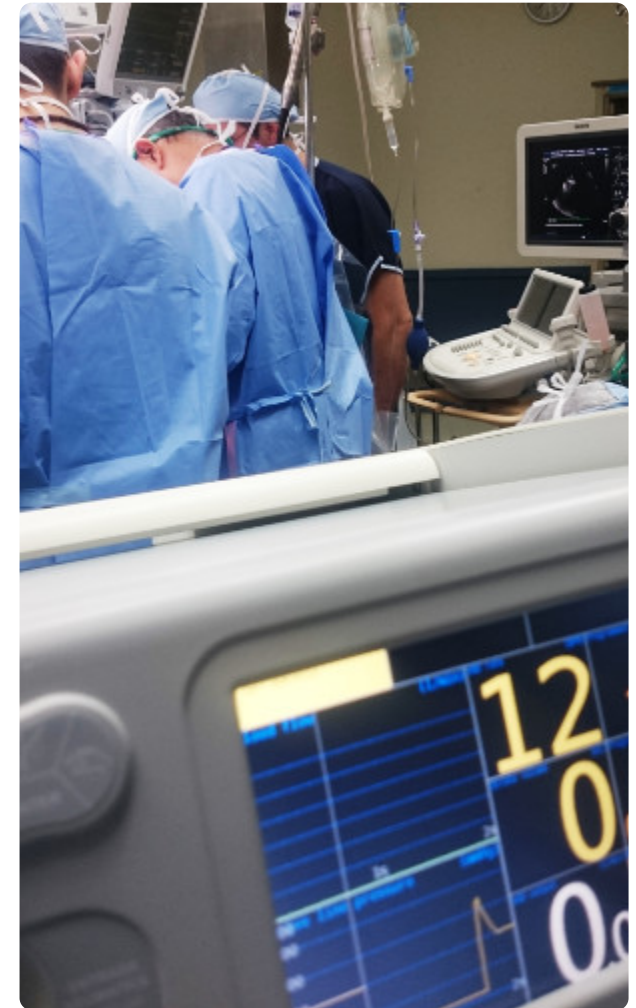
Dra Blanca Boolanos & Dr. Eduardo Insignares (<https://www.drsinsignaresbolano.com/>)

Dr Giuseppe Barbaro (Head of the Cardiology Section, Department of Medical Physiopathology, **University of Rome 'La Sapienza'**)



Dr Agnieszka Wilson (P4CD – Partners for Creative Development ... **#CanWeTalkAboutIt**)

Dr Bill Watson (Doctor in psychology, retired professor of mgmt psych, bioenergetic medicine, strategist and currently facilitator for several activist groups)





Dr. med. univ. Maria Hubmer-Mogg (General Practitioner, Resilience Coach, herbalist, and activist)



Dr Andrea Nazarenko, MA MA MAS PhD (Researcher, Consultant, Speaker, #1 Best Selling Author)



Dr Melissa Tiganitakis-Chios (Legislative Advocacy, Parents Rights, Holistic...)

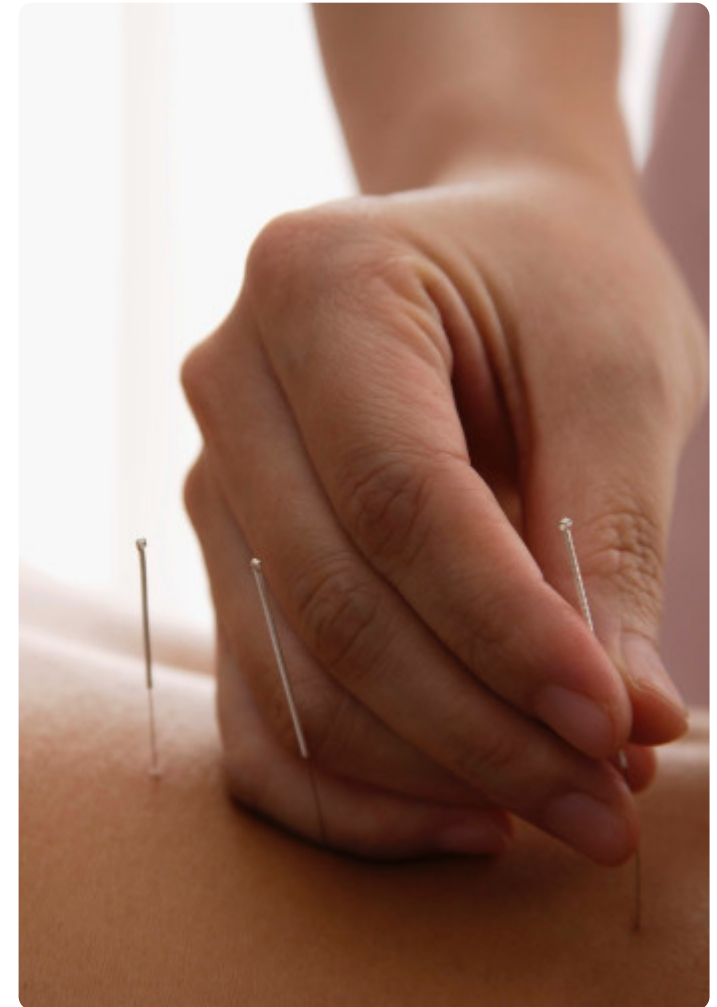
Dr Fabrizio Strata MD PhD (Researcher)



Franziska Back – Petersen (Arzte Stehen Auf)

Dr. Fabio La Falce (S.I.M. - Società Italiana Medici)

Dr Valter Canavero (Biologist – Nutritionist)





Swami Paramanandaji (spiritual teaching through **Satsanghs**)

James Roguski

Mr James Roguski (author, researcher, activist, and natural health advocate)



Miss Monica Smit (independant journalist and Managing Director at **Reignite Democracy Australia**)



Mr Markus Preising (Business economist FH)



Mr Samuel Riggerbach (founder of **Dialog Riggerbach Agency for Design, Communication & Events**)



Mr Jaime Rodriguez Taboada (Global Franchise Development Director)





Angela Weghorst (marketeer, author, marketing - /consumer insights consultant)



Debra Leigh (Founder of **Global Truth Network**)

Mr John Kage (IT specialist, activist and **Deputado Estadual - PSC**)



Dr. Luigi Brescia - President / Dr. Patrick Ekye Kwesie - Managing Director (PANWAYS GHANA)



Dr. Franca Brescia Armenante - President (PANWAYS & PARTNERS FOUNDATION)





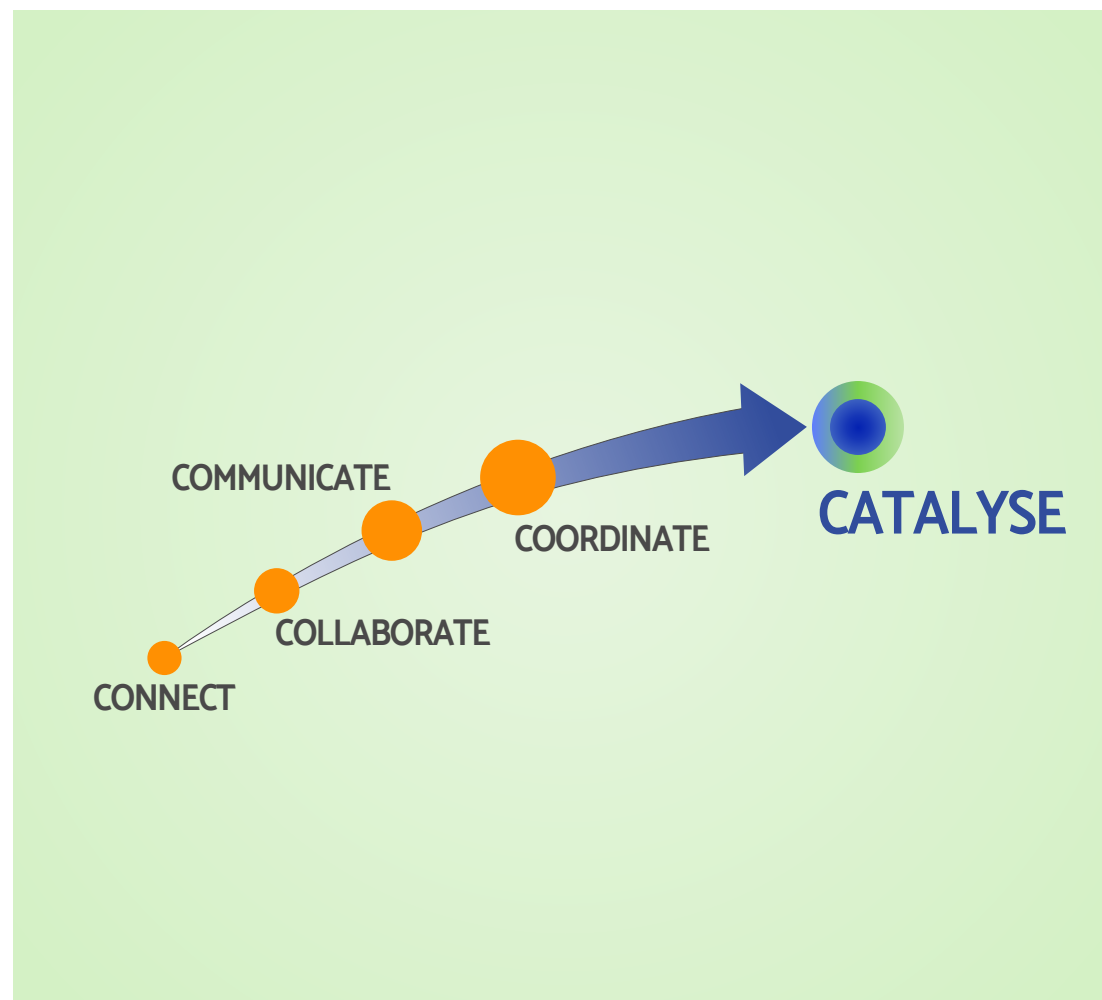
COMMENTS FROM FOUNDERS

COMMENTS FROM FOUNDERS

CONNECT, COLLABORATE, COMMUNICATE, COORDINATE AND CATALYSE ARE FUNDAMENTAL PILLARS FOR ALL WHB PROGRAMS. THIS IS A VERY BIG AND COMPLEX ENDEAVOR, AND WE ARE IN THE EARLY STAGES OF ESTABLISHING THE WHB ORGANIZATION AND IDENTIFYING AND PLANNING PRIORITY PROJECTS AND INITIATIVES. WE DO NOT HAVE ALL THE ANSWERS YET. BUT HOPEFULLY THE INFORMATION IN THIS PRESENTATION, PROVIDES ENOUGH INSIGHT FOR YOU TO HAVE CONFIDENCE IN OUR MISSION, OUR VISION, AND THE WAY FORWARD FOR WHB; AND MOTIVATES YOU TO PARTICIPATE IN THIS NEW WORLD HEALTHCARE ALLIANCE. COURAGE COULD BE SUMMED UP AS:

- BEING WILLING TO CAUSE TO BRING ABOUT ANY CHANGES
- PERSEVERING TO ACHIEVE THE EFFECT ONE HAS POSTULATED AGAINST ANY AND ALL ODDS.

WHB IS WILLING TO ESTABLISH A NEW PARADIGM FOR A NEW CIVILIZATION.



 **WHB**
CONTACTS

WHB PROJECT SOURCE:

ENG. MAURIZIO BOSCHERI:

✉ MAURIZIOBOSCHERI@WORLDHEALTHBOARD.NET

MRS MYRIAM BETTINELLI:

✉ MYRIAMBETTINELLI@WORLDHEALTHBOARD.NET

WHB SCIENTIFIC COMMITTEE PRESIDENT:

PROF. DR. CIRO ISIDORO D.SC., M.D. (MOLECULAR PATHOLOGIST)



A NEW PLANETARY HEALTH PROJECT

WWW.WORLDHEALTHBOARD.NET

SCAN
ME

